

1. Aşağıda verilen saatlerin öğleden sonraki karşılığını yazalım.

a 08.30 → 20.30

b 03.15 → .

c 10.30 → .

d 07.45 → .

e 09.15 → .

f 10.00 → .

g 05.15 → .

h 07.15 → .

i 04.00 → .

i 10.45 → .

j 02.30 → .

k 08.15 → .

l 11.00 → .

m 06.45 → .

n 01.15 → .

o 05.30 → .

2. Aşağıda verilen saatlerin öğleden önceki karşılığını yazalım.

a 16.15 → 04.15

b 21.30 → .

c 19.00 → .

d 15.30 → .

e 17.45 → .

f 22.30 → .

g 19.30 → .

h 18.00 → .

i 14.30 → .

i 13.15 → .

j 16.45 → .

k 23.30 → .

l 20.15 → .

m 15.00 → .

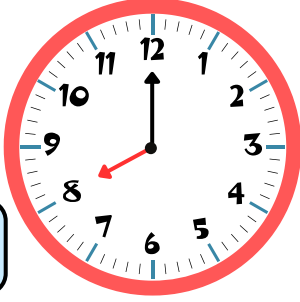
n 21.45 → .

o 17.15 → .

3. Aşağıda verilen saatlerin öğleden önce ve öğleden sonra gösterdikleri zamanları örnekteki gibi yazalım.

Öğleden  
Önce

08.00

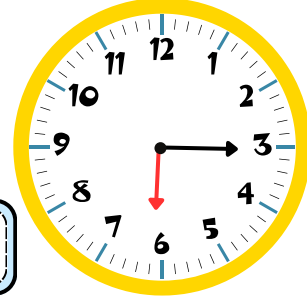


Öğleden  
Sonra

20.00

Öğleden  
Önce

.

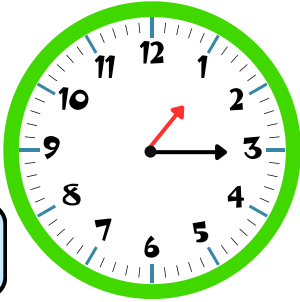


Öğleden  
Sonra

.

Öğleden  
Önce

.

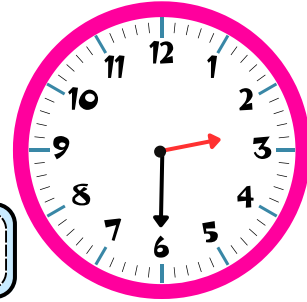


Öğleden  
Sonra

.

Öğleden  
Önce

.

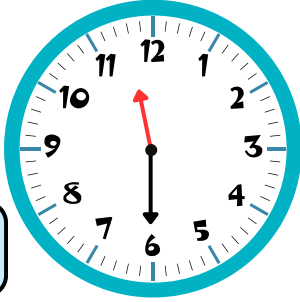


Öğleden  
Sonra

.

Öğleden  
Önce

.

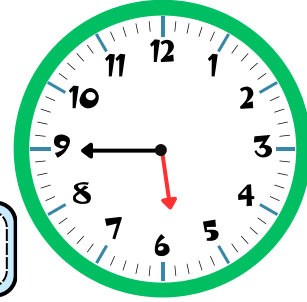


Öğleden  
Sonra

.

Öğleden  
Önce

.

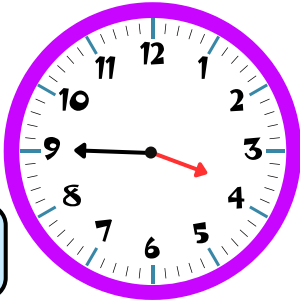


Öğleden  
Sonra

.

Öğleden  
Önce

.

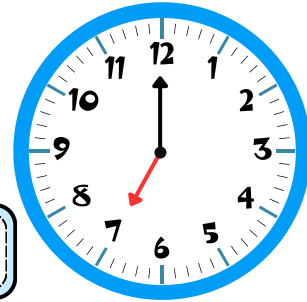


Öğleden  
Sonra

.

Öğleden  
Önce

.

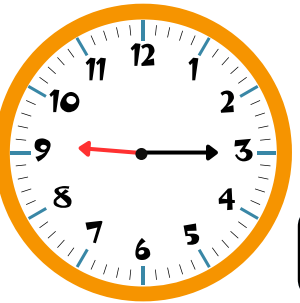


Öğleden  
Sonra

.

Öğleden  
Önce

.

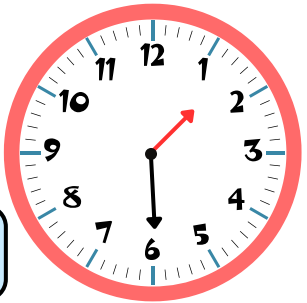


Öğleden  
Sonra

.

Öğleden  
Önce

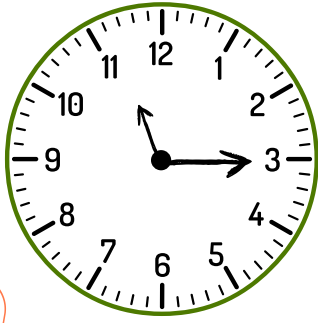
.



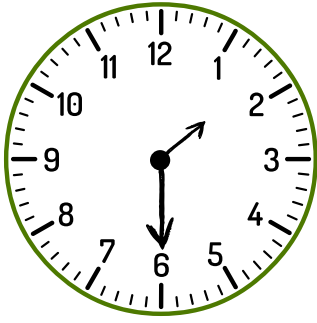
Öğleden  
Sonra

.

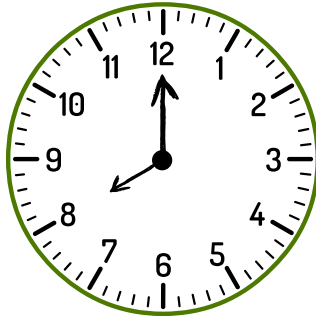
4. Verilen saatlerin öğleden önce ve öğleden sonra kaç gösterdiğini örnekteki gibi yazalım.



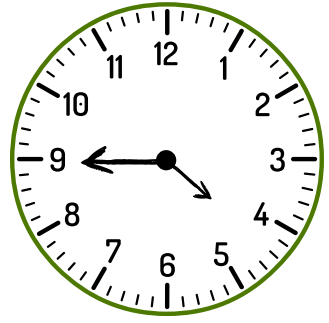
**11.15**



.



.



.

Öğleden önce

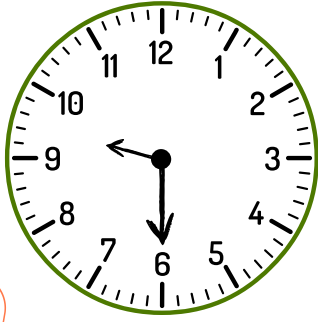
Öğleden sonra

**23.15**

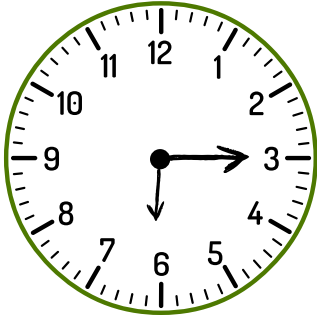
.

.

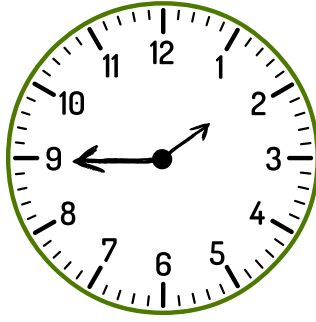
.



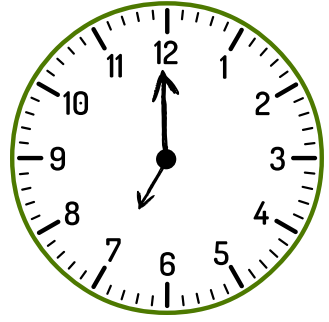
.



.



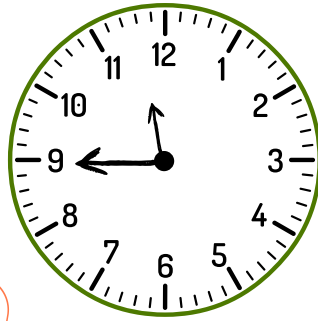
.



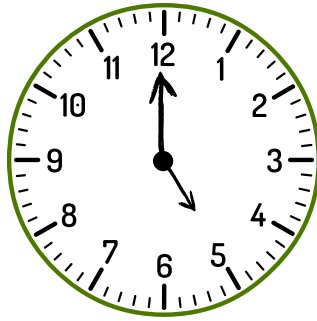
.

Öğleden önce

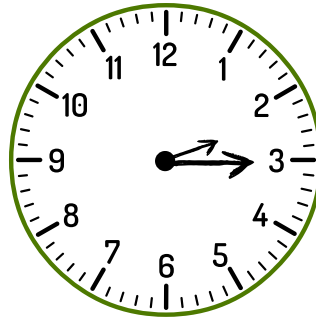
Öğleden sonra



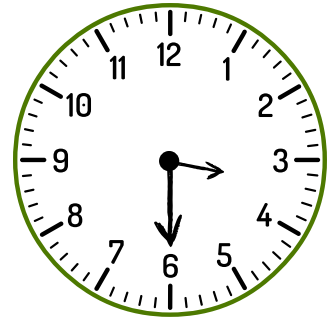
.



.



.



.

Öğleden önce

Öğleden sonra

.

.

.

.